

KVR1066D3S7/1G

1GB 128M x 64-Bit PC3-8500

CL7 204-Pin SODIMM

DESCRIPTION:

This document describes ValueRAM's 128M x 64-bit 1GB (1024MB) DDR3-1066 CL7 SDRAM (Synchronous DRAM) memory module, based on eight 128M x 8-bit DDR3-1066 FBGA components. The SPD is programmed to JEDEC standard latency 1066Mhz timing of 7-7-7 at 1.5V. This 204-pin SODIMM uses gold contact fingers and requires +1.5V. The electrical and mechanical specifications are as follows:

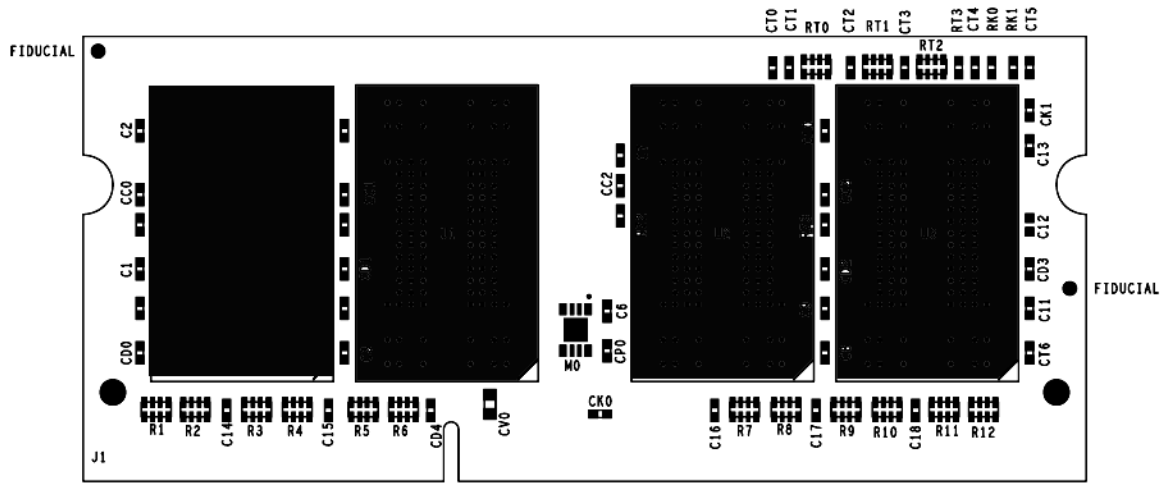
FEATURES:

- JEDEC standard 1.5V \pm 0.075V Power Supply
- VDDQ = 1.5V \pm 0.075V
- 533MHz fCK for 1066Mb/sec/pin
- 8 independent internal bank
- Programmable CAS Latency: 6,7,8,9
- Posted CAS
- Programmable Additive Latency: 0, CL - 2, or CL - 1 clock
- Programmable CAS Write Latency(CWL) = 7(DDR3-1066)
- 8-bit pre-fetch
- Burst Length: 8 (Interleave without any limit, sequential with starting address "000" only), 4 with tCCD = 4 which does not allow seamless read or write [either on the fly using A12 or MRS]
- Bi-directional Differential Data Strobe
- Internal(self) calibration : Internal self calibration through ZQ pin (RZQ : 240 ohm \pm 1%)
- On Die Termination using ODT pin
- Average Refresh Period 7.8us at lower then TCASE 85°C, 3.9us at 85°C < TCASE . 95°C
- Asynchronous Reset
- PCB : Height 1.180" (30.00mm), double sided component

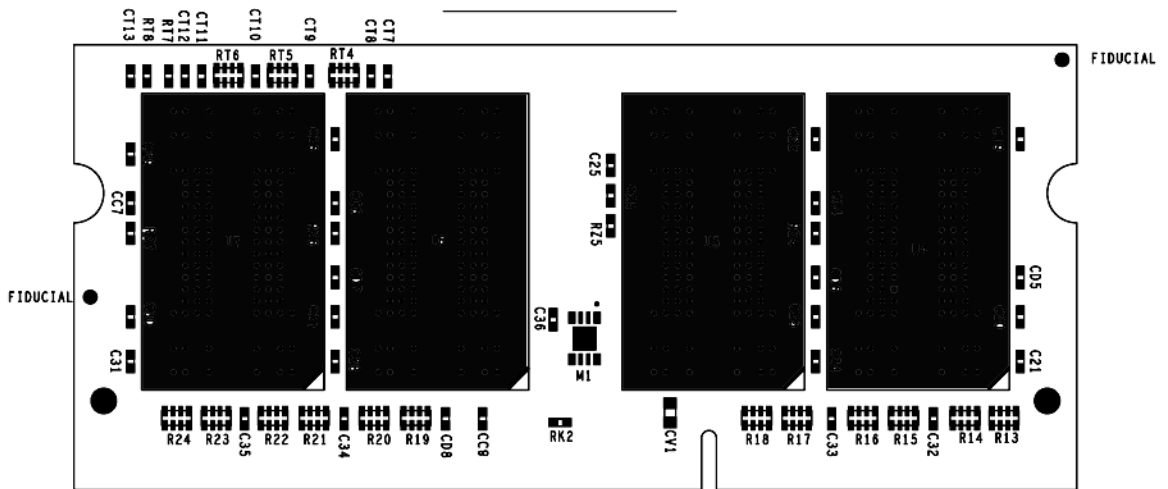
PERFORMANCE:

- | | |
|--|---------------------|
| <input checked="" type="checkbox"/> CL(IDD) | 7 cycles |
| <input checked="" type="checkbox"/> Row Cycle Time (tRCmin) | 50.63ns (min.) |
| <input checked="" type="checkbox"/> Refresh to Active/Refresh Command Time (tRFCmin) | 110ns |
| <input checked="" type="checkbox"/> Row Active Time (tRASmin) | 37.5ns (min.) |
| <input checked="" type="checkbox"/> Power | 1.080 W (operating) |
| <input checked="" type="checkbox"/> UL Rating | 94 V - 0 |
| <input checked="" type="checkbox"/> Normal Operating Temperature | 0° C to 85° C |
| <input checked="" type="checkbox"/> Storage Temperature | -55° C to +100° C |

MODULE DIMENSIONS:



PRIMARY SIDE



SECONDARY SIDE

